

Public Review of the Environmental Impact Statement for the Goi Thermal Power Station Replacement Plan

1. Public Review of the Environmental Impact Statement

- Period

Tuesday, 24 April through Wednesday, 30 May 2018 (except weekends and holidays)

- Posting Locations and Times

Posting Location	Place	Time
Environmental Policy Division, Environmental and Community Affairs Dept., Chiba Prefectural Government	1-1 Ichiba-cho, Chuo-ku, Chiba, Chiba Pref.	9:00 AM–5:00 PM
Environmental Management Division, Environmental Dept., Ichihara City Hall	1-1-1 Kokubunjidai-chuo, Ichihara, Chiba Pref.	8:30 AM–5:15 PM
Goi Branch Office of Ichihara City	Sunplaza Ichihara 2 nd Floor 1-1-25 Goichuo-nishi, Ichihara, Chiba Pref.	
Ichihara Branch Office of Ichihara City	1050-3 Yawata, Ichihara, Chiba Pref.	
Environmental Conservation Section, Environmental Conservation Dept., Bureau of Environment, Chiba City Hall	1-1 Chibaminato, Chuo-ku, Chiba Chiba Pref.	8:30 AM–5:30 PM
Chuo Ward Office of Chiba City	3-10-8 Chuo, Chuo-ku, Chiba, Chiba Pref.	
Mihama Ward Office of Chiba City	5-15-1 Masago, Mihama-ku, Chiba, Chiba Pref.	
Hanamigawa Ward Office of Chiba City	1-1 Mizuho, Hanamigawa-ku, Chiba, Chiba Pref.	
Inage Ward Office of Chiba City	4-12-1 Anagawa, Inage-ku, Chiba, Chiba Pref.	
Wakaba Ward Office of Chiba City	2-1-1 Sakuragi-kita, Wakaba-ku, Chiba, Chiba Pref.	
Midori Ward Office of Chiba City	3-15-3 Oyumino, Midori-ku, Chiba, Chiba Pref.	
Chiba City Central Library	3-7-7 Benten, Chuo-ku, Chiba, Chiba Pref.	Tuesday–Friday 9:30AM–9:00PM Saturday, Sunday, and holidays, 9:30AM– 5:30PM
Municipal Information Office of Sodegaura City	1-1 Sakado-ichiba, Sodegaura, Chiba Pref.	9:00 AM–5:00 PM

2. Publication on Website

The Environmental Impact Statement can also be found on the JERA website from Tuesday, 24 April through Wednesday, 30 May 2018.

URL: <http://www.jera.co.jp/corporate/assessment/goi.html> (Japanese only)

3. Contact

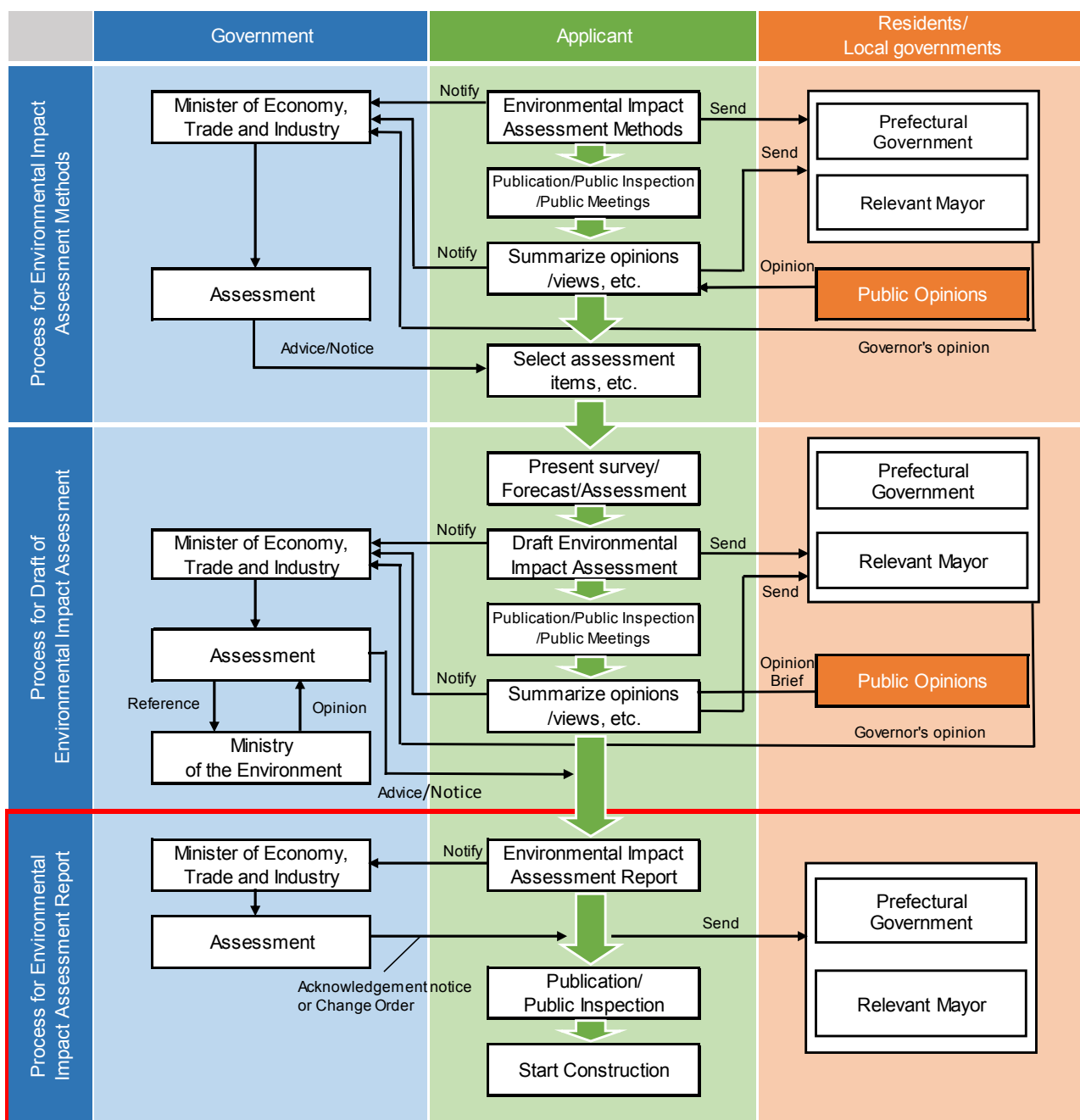
Power Project Development (Japan) Unit, Energy Infrastructure Group

Power Generation Business Department, JERA Co., Inc.

Tel +81-(0)3-6327-5674

(9:00AM–5:00PM, except weekends and holidays)

Process for the Environmental Impact Assessment¹



¹ Procedure based on the Environmental Impact Assessment Law prior to its amendment in 2011.