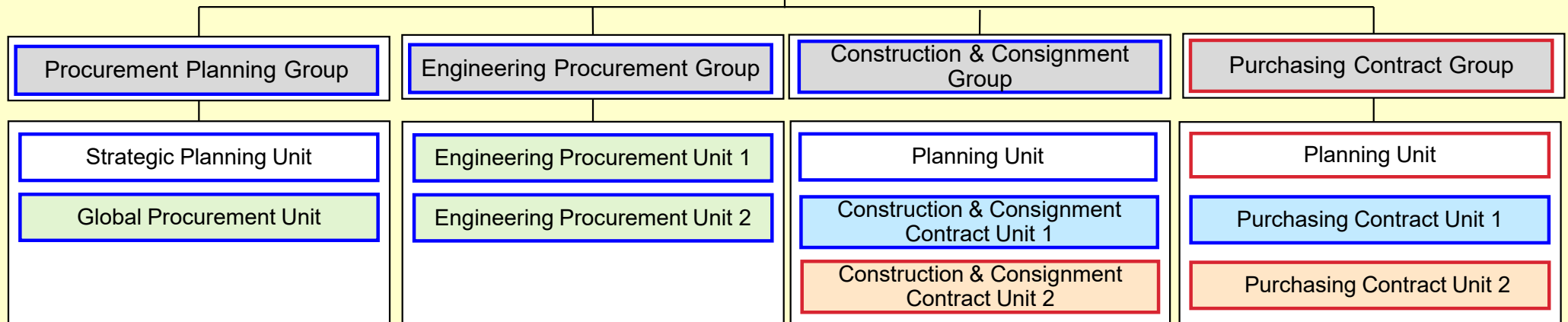


Organization Chart [as of 9th Dec 2023]

Equipment & Materials Procurement Division

★ The Head of the Equipment & Materials Procurement Division will work at the Hibiya Kokusai Building.



Legend)

Blue : Located at 9th Floor of Hibiya Kokusai Building

Orange : Located of 16th Floor of JP Tower Nagoya

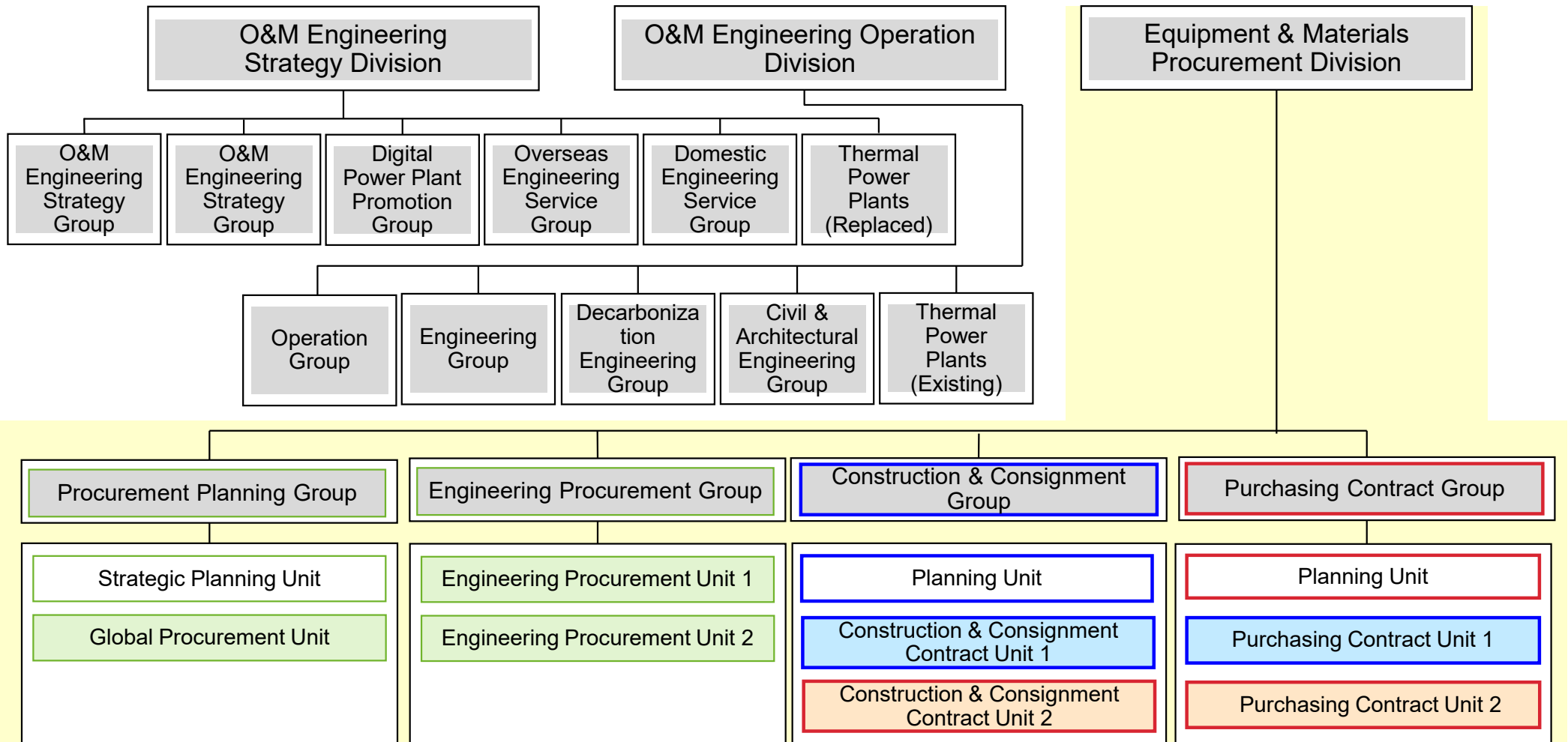
Green Cells: Responsible for **Specific Contracts of entire company and headquarter**

Blue Cells: Responsible for Contracts of Plants at East Japan and East Japan Branch *

Orange Cells: Responsible for Contracts of Plants at West Japan and West Japan Branch *

* Unit 1s are for East Japan , and Unit 2s for West Japan

Organization Chart [as of 8th Dec 2023]



Legend)

Green : Located at 25th Floor of Nihonbashi Takashimaya Mitsui Building

Blue : Located at 9th Floor of Hibiya Kokusai Building

Orange : Located of 16th Floor of JP Tower Nagoya

Green Cells: Responsible for **Specific Contracts of entire company and headquarter**

Blue Cells: Responsible for Contracts of Plants at East Japan and East Japan Branch *

Orange Cells: Responsible for Contracts of Plants at West Japan and West Japan Branch *

Organization Chart [as of 31st Mar 2023]

